

PFLASTERMEISTER

MORTAR SOLUTIONS



PFLASTERMEISTER
.COM

TECHNOLOGY



SIMPLE
SUSTAINABLE
FUNCTIONAL

**TAKE A
LOOK!**

GENERAL INFORMATION

Do you ask yourself occasionally, whether things were actually different in the past and whether the products were easier to use? Even if some things have changed, a lot has still remained the same. More complex and complicated demands require complicated solutions – this is at least maintained.

Our experience shows that more complex solutions often fail due to the people who are supposed to put them into practice. During the development of our range of **PFLASTERMEISTER** Products we have only concentrated on the question of easy application and practicality:

“How can we make our products as simple and user-friendly as possible?”

We came to the conclusion that those who execute the work must be supported by solutions that are simple and easy to use. Ad Fontes (lat. back to the sources) might be the best summary to describe the **PFLASTERMEISTER** Products:

- Special, lime-free mineral aggregate
- No storage limit
- Easy and tolerant processing
- Tolerant in terms of the amount of mixing water
- Easy to clean with a sponge, sponge cleaning machine, or by rinsing.

We do not claim that our products are **better** or even **unprecedented**, but we know that the edge of our **PFLASTERMEISTER** Mortar solutions is that they were developed from practice for the user.

PFLASTERMEISTER stands for the **highest quality, easy processing** and **reliability**.

The **PFLASTERMEISTER** Mortar solutions are exclusively available with certified and trained distributors. Companies buying our **PFLASTERMEISTER MORTAR SOLUTIONS** will receive a free training product for each of the individual application circumstances.



PFLASTERMEISTER JOINTINGMORTAR
with patented additive
Patentno.: 516171



PFLASTERMEISTER JOINTING MORTAR EASY GK 1.5 MM

PFLASTERMEISTER JOINTING MORTAR EASY is particularly suitable for:

- For joint space widths of 8 mm to 20 mm (40mm)
- The bound and mixed paving construction type
- For jointing stone and slab pavings

PFLASTERMEISTER JOINTING MORTAR EASY can be mixed to be used as:

- slurry grout mortar with non-viscous consistency
- and sealing mortar for masonry and edging joints with stiff-plastic consistency.

Depending on the requirements and on the application type, the **PFLASTERMEISTER JOINTING MORTAR EASY** will be mixed with 3.5 liters to 5 liters of water per 25 kg bag using a pug mill mixer or double-stirrer.

To facilitate the jointing process, make sure to use a lot of water before, during and after jointing. Before jointing, the area to be jointed must be pre-wetted for sufficient **amount of time**, using **a lot** of water. This renders the stones or slabs dust-free and ensures that enough moisture is stored within the paving construction. Incorporating of the **PFLASTERMEISTER JOINTING MORTAR EASY** can also be done during a light drizzle. The **PFLASTERMEISTER JOINTING MORTAR EASY** is designed to offer a very good processing during low as well as high temperatures.

Under direct insolation weathering it must be ensured that the surface is constantly kept wet. Jointing paved areas using the slurry grout method is effected by continuously pointing the joint gaps while the slurry is still wet until the joint spaces are completely filled and the jointing material in the spaces is slightly arching upwards.

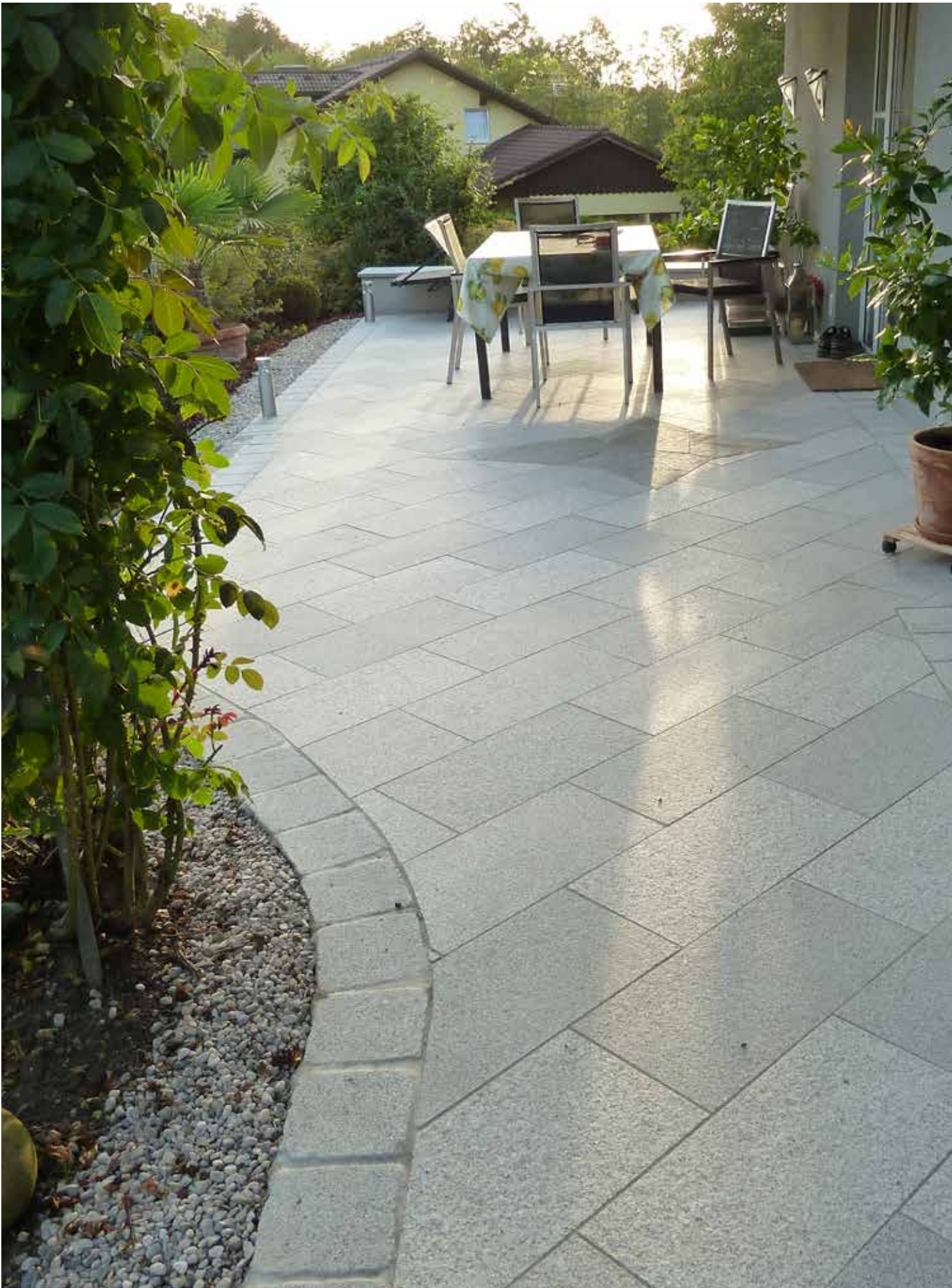
When jointing is completed, the jointed area must be kept moist by lightly sprinkling with water so that the **JOINTING MORTAR** on the surface does not start to dry on the surface. There may also be a thin water film across the entire surface. This procedure allows the cleaning (collecting the mortar residue off the surface) to be feasible for up to 1.5 hours, depending on the temperature and exposure to sunlight. Cleaning the paving is then effected by scraping off the excess **JOINTING MORTAR** using a squeegee; the final cleaning can then be effected with a sponge board, a sponge cleaning machine or a high pressure cleaner.

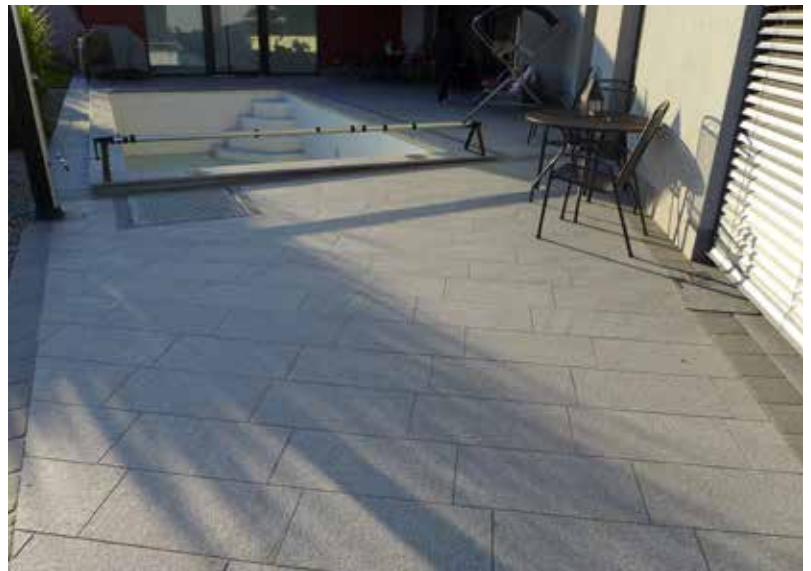
Technical data

Color	gray/ light gray	
Largery corn	1,5mm	
Dry raw density	2160 kg/m ³	
Compression strength	after 3 Days	> 20 N/mm ²
	after 7 Days	> 40 N/mm ²
	after 28 Days	> 50 N/mm ²
Tensile bending strength		> 7 N/mm ²
Adhesive tensile strength		> 3 N/mm ²
Joint spreads	min. 5mm	max. 40mm
Consumption	approx 2,2 kg/l Cavity	
Processing consistency	according to water addition stiff- to soft plastically	
Processing time	approx 30 Minutes	
Processing temperature	+5°C to +25°C	
Frost- and de-icing salt resistance	no certificate according ONR 23303	
Phosphorus content	5,36mg/kg	
Patented additive	patentno. 516171	

JOINTING SEQUENCE WITH SLABS







JOINTING SEQUENCE OF CUBESTONE PAVING



USE AS A MASONRY JOINT







PFLASTERMEISTER JOINTING MORTAR EASY FOR A NATURAL-SWIMMING-POOL

Next to his use in the paving construction **PFLASTERMEISTER JOINTING-MORTAR EASY** was tested from Austrian „ARGE Gewässermanagement“ and was released for the use in natural swimming ponds.

With **PFLASTERMEISTER QUARTZ GRAVEL** RK 2/4 to 8 mm **PFLASTERMEISTER JOINTING-MORTAR EASY** can be mixed 1:2 to a drainage bedding mortar, this can be used to set solid steps, natural stone walls or slabs in natural-swimming-pools.

PFLASTERMEISTER QUARTZ GRAVEL RK 2/4 was also tested from „ARGE Gewässermanagement“ and was released for constructions of natural-swimmingpools.

TECHNICAL DATA

Phosphorgehalt Jointingmortar EASY	5,36mg/kg P
Quartz gravel	2,85 mg/kg P





PFLASTERMEISTER JOINTING MORTAR EASY PLUS Gk 1,5 MM

PFLASTERMEISTER JOINTING MORTAR EASY PLUS is eminently suitable for

- jointing width from 8 mm to 20 mm (40mm)
- the bound, unbound and mixed paving construction type
- jointings of cubestone and slabs

PFLASTERMEISTER JOINTING MORTAR EASY PLUS is used

- as slurry grout mortar with non-viscous consistency
- as jointing mortar for cubestones and slabs with particular requirements of frost and de-icing salt resistance.

Depending on the requirements the **PFLASTERMEISTER JOINTING MORTAR EASY PLUS** is mixed with 3,5 to 4,5 liter water per 25 kg bag using a pug mill mixer or double-stirrer.

To facilitate the jointing process, make sure to use a lot of water before, during and after jointing. Before jointing, the area to be jointed must be pre-wet for sufficient amount of time, using A LOT of water. This renders the stones or slabs dust-free and ensures, that enough moisture is stored within the paving construction. Inserting the **PFLASTERMEISTER JOINTING MORTAR EASY PLUS** can also be done during a light drizzle. The **PFLASTERMEISTER JOINTING MORTAR EASY PLUS** is designed to offer a very good processability during low as well as high temperatures.

Under direct insolation weathering it must be ensured that the surface is constantly kept wet. Jointing paved areas using the slurry grout method is effected by continuously pointing the joint gaps while the slurry is still wet until the joint spaces are completely filled and the jointing material in the spaces is slightly arching upwards.

When jointing is completed, the jointed area must be kept moist by lightly sprinkling with water so that the **JOINTING MORTAR** on the surface does not start to dry on the surface. There may also be a thin water film across the entire surface. This procedure allows the cleaning (collecting the mortar residue off the surface) to be feasible for up to 1.5 hours, depending on the temperature and exposure to sunlight. Cleaning the paving is then effected by scraping off the excess **JOINTING MORTAR** using a squeegee; the final cleaning can then be effected with a sponge board, a sponge cleaning machine or a high pressure cleaner.

TECHNICAL DATA

Color	grey/ light grey	
Lagery corn	1,5mm	
Dry raw density	2180 kg/m ³	
Compression strength	after 3 days	> 25 N/mm ²
	after 7 days	> 45 N/mm ²
	after 28 days	> 80 N/mm ²
Tensile bending strength		> 8 N/mm ²
Adhesive tensile strength		> 4 N/mm ²
Joint spreads	min. 5mm	max. 40mm
Consumption	ca. 2,2 kg/l Cavity	
Processing consistency	according to water addition stiff- to soft plastically	
Processing time	approx. 30 Minutes	
Processing temperature	+5°C to +25°C	
Frost- and de-icing salt resistance	XF4 according to ONR 23303	
Patented additive	patentno.: 516171	

PERFECT FOR PARTICULAR REQUIREMENTS



PFLASTERMEISTER STABILISATION MORTAR EASY FIX

PFLASTERMEISTER STABILISATION MORTAR EASY FIX is *new, different, solution-oriented* and *redefines standards*.

Building a bound or mixed paving constructions you are obliged to fill the joints entirely with grout. Especially in the mixed paving construction, when the stones are paved in crushed gravel is this obligation to fill the joints just with grout is a big challenge.

Commonly most installers fill the joint with crushed gravel and compact the stones with a vibratory plate. Then the remaining joint is filled with grout mortar. This implementation is faster, easier and cheaper to install, but it just has a very short life expectancy. Especially the joints will get fissures very easily and in the case of heavy load they just break out and the crushed gravel gets visible.

PFLASTERMEISTER STABILISATION MORTAR EASY FIX builds a bridge between the *bound, unbound* and *mixed* paving constructions.

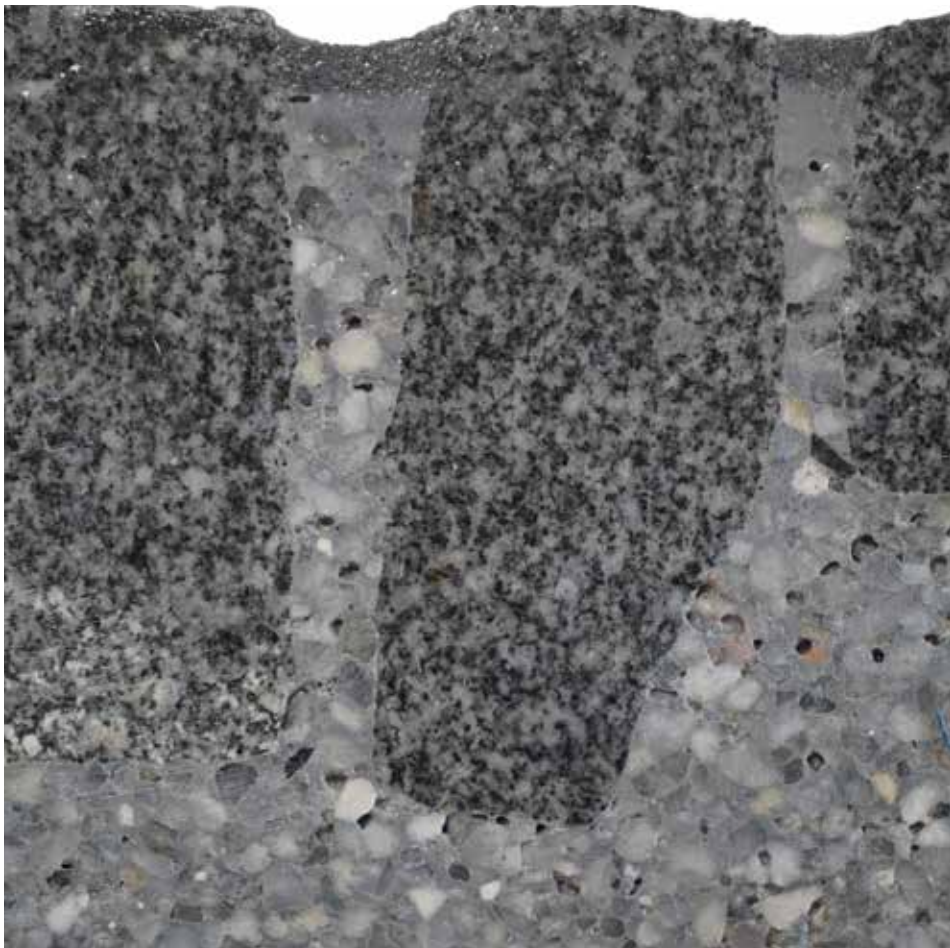
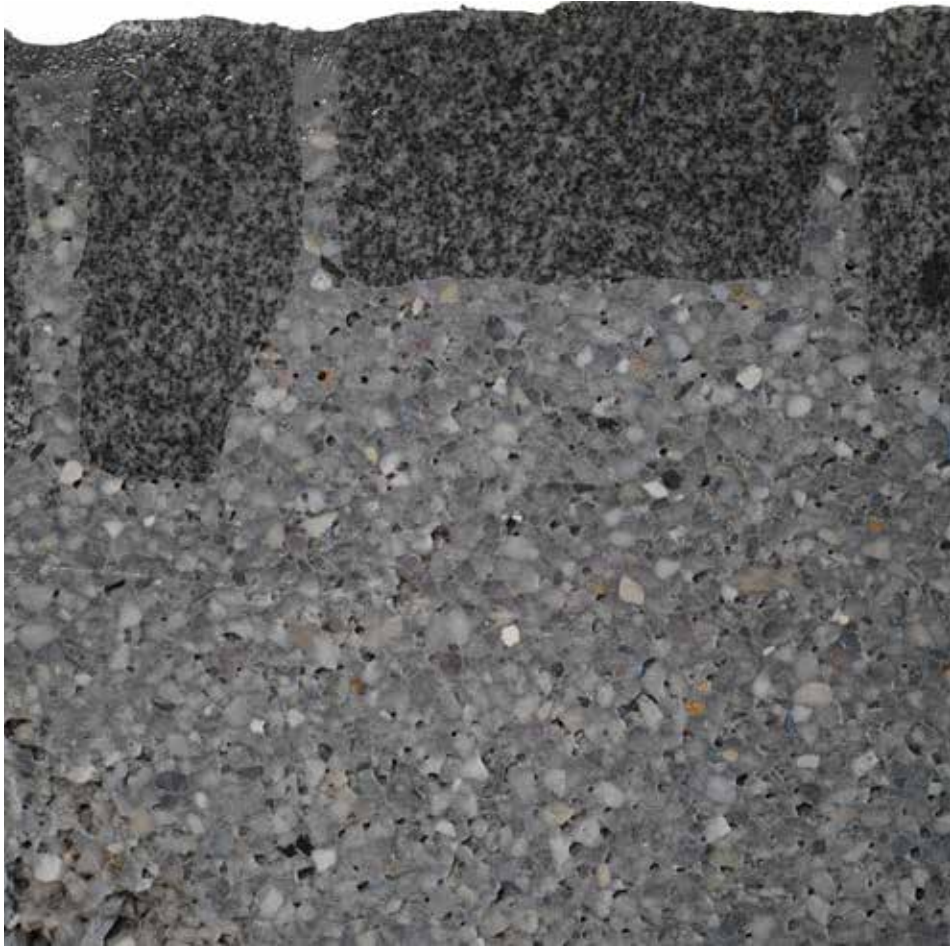
How to use **EASY FIX**: With **PFLASTERMEISTER STABILISATION MORTAR EASY FIX** you can build a fully unbound construction as you cobble the cubestones into rough crushed gravel (4/8), fill the joints as well with the rough gravel (4/8) used for the bedding and compact the stones with a vibratory plate. So far you have done the whole construction, that means: *easy, fast* and *cheap*.

After the compaction the gravel sinks in the joints. Now you can implement **PFLASTERMEISTER EASY FIX** in quite a liquid consistency. You mix **PFLASTERMEISTER STABILISATION MORTAR EASY FIX** with 8 to 12 Liter water per package (25kg). The penetration depth of **PFLASTERMEISTER STABILISATION MORTAR EASY FIX** can be controlled due the amount of water. The material requirement depends on the consistency and the used gravel and is approximately 15 to 25kg per m². Pour the thin-liquid material on the surface, **EASY FIX** trickles off into the joints and the bedding material. You can speed up the procedure as you use a vibratory plate during the procedure, then the **JOINTING MORTAR** sinks into the joints quicker.

When the joints are filled with **EASY FIX** approximately 2 to 3cm underneath the surface, you have to clean the surface with a pressure washer, with low pressure. The remaining joints (2 to 3cm) have to be filled evenly with **PFLASTERMEISTER JOINTING MORTAR EASY**. Finally you have to clean the surface again (with pressure water or sponge ..)

With this kind of material and this kind of construction on the one hand you can build the paving economically and on the other hand you can build a sound construction, this because of the afterwards installing of mortar in the joints and the bedding-material.

PFLASTERMEISTER STABILISATION MORTAR EASY FIX is *new*, designed with a *unique idea* for the practical use. This kind of paving construction is a non regulated special-construction.



PFLASTERMEISTER JOINTING MORTAR SPEED GK 1 MM

The **PFLASTERMEISTER JOINTING MORTAR SPEED** is particularly suitable for:

- the early-heavy-trafficking bound paving construction type,
- jointing stone or slab pavings
- joint spaces of 8 mm to 20 mm
- repairing damage on jointing material / refurbishing joints
- areas subjected to full load after 24 hours.

The **PFLASTERMEISTER JOINTING MORTAR SPEED** is inserted over a **small area** as a slurry grout mortar with plastic consistency. To facilitate the jointing process, make sure to use a lot of water before, during and after jointing. Before jointing, the area to be jointed must be pre-wet for **sufficient amount of time**, using **a lot of water**. This renders the stones or slabs dust-free and ensures that enough moisture is stored within the paving construction. Inserting the **PFLASTERMEISTER JOINTING MORTAR SPEED** can also be done during a light drizzle.

The **PFLASTERMEISTER JOINTING MORTAR SPEED** is designed to offer full load bearing capability already after 24 hours. This applies exclusively for the joint fillers. The layers below (porous concrete and bedding concrete) must be built accordingly with fast drying concrete. Depending on the temperature, the processing time is 15-30 minutes. Jointing large areas must be done quickly, section by section. Due to the free-flowing properties of the **PFLASTERMEISTER JOINTING MORTAR SPEED**, it can only be used for areas with a maximum surface gradient of 5 %. For higher gradients, the joint spaces must be filled in two working steps.

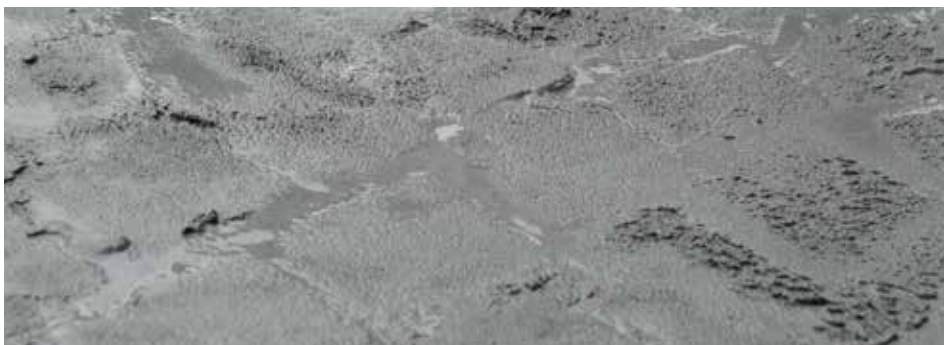
PFLASTERMEISTER JOINTING MORTAR SPEED should only be used under temperatures below 20 °C/ 68 °F and under no direct exposure to sunlight. Otherwise the processing time reduces rapidly and the cleaning process will be significantly more difficult. During direct exposure to sunlight, it must be ensured during jointing that the surface is constantly kept MOIST. If too much water is used, a "sinter layer" may develop and the surface of the jointing mortar will fade. The small sections must be jointed and cleaned sequentially.

Cleaning the paving is then done by scraping off the excess jointing mortar using a squeegee; the final cleaning can then be done with a sponge board, a sponge cleaning machine or a high pressure cleaner.

TECHNICAL DATA

Color	grey / light grey	
Largely grain	1mm	
Dry raw density	2180 kg/m ³	
Compression strength	after 24 hours	> 30 N/mm ²
	after 72 hours	> 60 N/mm ²
	after 7 days	> 75 N/mm ²
	after 28 days	> 85 N/mm ²
Tensile bending strength		> 8 N/mm ²
Adhesive tensile strength		> 4 N/mm ²
Joint width	min. 5mm	max. 20mm
Consumption	ca. 2,2 kg/l Cavity	
Processing consistency	according to water addition stiff- to soft plastically	
Processing time	approx. 15-30 Minutes	
Processing temperature	+5°C to +25°C/ +41°F to + 77°F	
Frost- and de-icing salt resistance	XF4 proofed according ONR 23303	
Weathering after 56 days	7,2g/ m ²	
Patented additive	patentno.: 516171	

JOINTING REPAIRS



PFLASTERMEISTER BEDDINGMORTAR SPEED GK 8 MM

EARLY-HEAVY-TRAFFICKING CONSTRUCTIONS WITH PFLASTERMEISTER SPEED

PFLASTERMEISTER SPEED is a high performance product, designed for early-heavy-trafficking and other time-critical repairs. Particularly, the bedding mortar is, apart from the joint, the decisive factor if a bound construction can be exposed to full load already after a few hours.

Beside its use for early-heavy-trafficking **JOINTING** for special demands and time-critical repairs, **PFLASTERMEISTER SPEED** can be used to prepare complete early-heavy-trafficking constructions.

For a early-heavy-trafficking beddingmortar mix **PFLASTERMEISTER SPEED** with **PFLASTERMEISTER QUARTZ GRAVEL** in a mixing ratio 1:2. Especially for early-heavy-trafficking constructions use wet and dustfree stones to achieve a good layer composite.

Additionally **PFLASTERMEISTER SPEED** is mixed as a bonding slurry in a soft-plastically consistency. The stones are dipped in the bonding slurry and then paved in the early-heavy-trafficking bedding mortar. Jointing should be made wet in wet. Depending on the outside temperature and insolation, the processing time is 15-20 minutes. If necessary traffic release is possible within few hours.

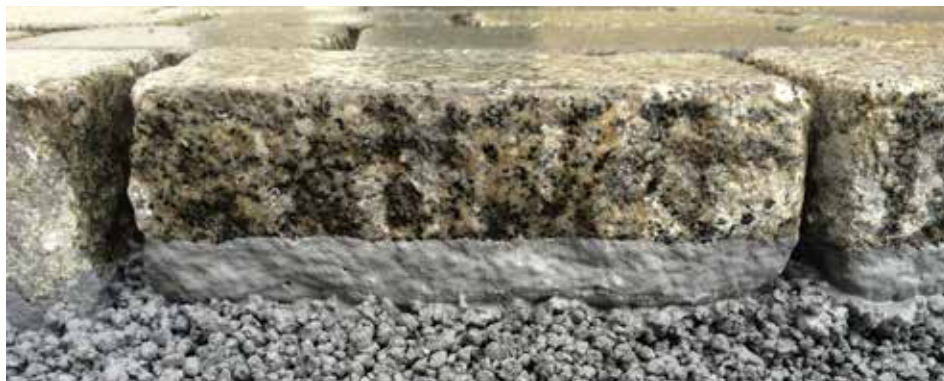
PFLASTERMEISTERBEDDING MORTAR SPEED GK 4 mm is produced with one bag of **PFLASTERMEISTERJOINTING MORTAR SPEED** and three 25-kg bags of high-quality lime-free mineral aggregate with hydrophobic properties.

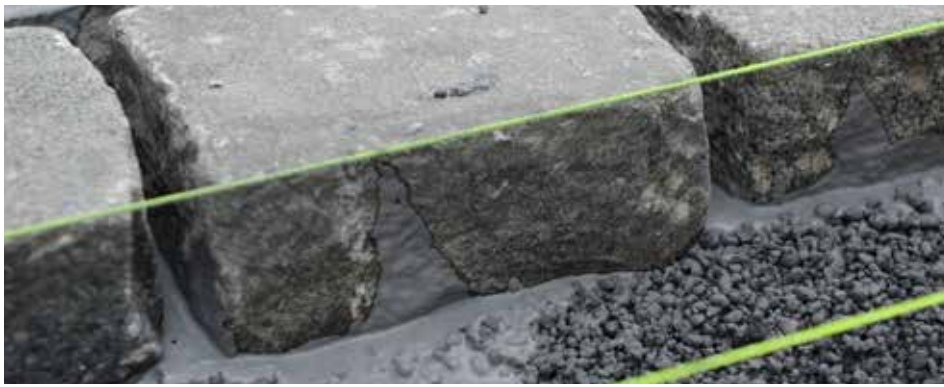
PFLASTERMEISTERBEDDING MORTAR SPEED GK 4 mm is produced using a pug mill mixer under constant mixing and a mixing time of approximately 5-7 minutes and a water quantity of 4-5 liters.

Data of compression strength for **PFLASTERMEISTER SPEED BEDDING MORTAR** with **PFLASTERMEISTER QUARTZ GRAVEL**

TECHNICAL DATA

Color	grey/light grey	
Compression strength	after 24 hours	> 22 N/mm ²
	after 72 hours	> 40 N/mm ²









PFLASTERMEISTER QUARTZ GRAVEL 2/4 UP TO 8MM

Do you sometimes ask yourself why paving areas, which were seemingly created with the best material, do not last?

The answer is simple: Conventional products and conventional bedding mortar contain mainly *limy supplements*.

PFLASTERMEISTER QUARTZ GRAVEL 2/4 offers, along with other **PFLASTERMEISTER** products, a *creative* and *solution-oriented* approach for *sustainable* and *functional building*.

PFLASTERMEISTER QUARTZ GRAVEL is lime-free and has a SiO₂-content of less than 95%.

A lower LA-value offers other advantages in regards to *slag disintegration* and resistance to *load effect*.

Approved and released for ponds, **PFLASTERMEISTER QUARTZ GRAVEL** offers the right material for *sustainable solutions* in the natural swimming pond area.

PFLASTERMEISTER QUARTZ GRAVEL offers in combination with **PFLASTERMEISTER SPEED** the ultimate bedding mortar/underlay. **PFLASTERMEISTER QUARTZ GRAVEL** and **PFLASTERMEISTER SPEED** will result in resistance to pressure after 24 hours, while usually this resistance appears after 28 days.

A natural and *sustainable natural resource*, which brings you *security* and *reliability, sustainability* and *high load values*.

PFLASTERMEISTER QUARTZ GRAVEL 2/4

A solution with class!



PFLASTERMEISTER ECO-JOINTING PLUS GK 2

Use **PFLASTERMEISTER ECO-JOINTING PLUS GK2** as joint compound material for natural or artificial stone.

PFLASTERMEISTER ECO-JOINTING PLUS GK2 meets your demands on a weed retardant joint compound-based on *sustained* and *ecological resources*.

PFLASTERMEISTER ECO-JOINTING PLUS GK2 is certified by LWG (Landesanstalt für Weinbau und Gartenbau; State Institute for Viticulture and Horticulture), which tested the growth oppressive impact of **PFLASTERMEISTER ECO-JOINTING PLUS GK2**. This test confirms, that **PFLASTERMEISTER ECO-JOINTING PLUS GK2** is environmentally friendly and in the *long run* unwanted vegetation can be avoided.

You can sweep **PFLASTERMEISTER ECO-JOINTING PLUS GK2** in the jointings, as you are used to. When installing natural stone pavings, especially cube stone pavings, use **PFLASTERMEISTER ÖKO-FUGE PLUS GK2** as joint compound, with concrete stone pavings which small jointings you can fill the whole jointing-height.

PFLASTERMEISTER ECO-JOINTING GK 4

PFLASTERMEISTER ECO-JOINTING GK4 is 100 % produced in Austria with natural resources and is made without chemical and inorganic binding materials.

Use **PFLASTERMEISTER ECO-JOINTING GK4** as joint compound in unbound paving constructions.

You can use **PFLASTERMEISTER EKO-FUGE GK4** as a functional and sustainable joint compound for small cobblestones, large cobblestones and natural-stone large-sized slabs. Due to the well-balanced coordination of its natural resources an outstanding blending of **PFLASTERMEISTER ECO-JOINTING GK4** and a good stability in the joints can be achieved by usage in the grouting procedure.

Ecological, sustainable and ecological is your new access, if it comes to unbound jointing materials.

PFLASTERMEISTER ECO-JOINTING GK4

... the only solution if you think further!





PFLASTERMEISTER

.COM

TOOLS



TRAININGS



TECHNOLOGY



DAS
PFLASTERKOMPETENZZENTRUM

